

Location: Lakeville, MN



**UNDERWRITERS
Salvage Company**



**UNDERWRITERS
Salvage Company**



**UNDERWRITERS
Salvage Company**



525
500
475



**UNDERWRITERS
Salvage Company**



**UNDERWRITERS
Salvage Company**



N622AW



TRAFFIC



UNDERWRITERS
Salvage Company

N622AW

Dim
PITCH SYNC



MAINTAIN COORDINATED FLIGHT AT ALL TIMES

DO NOT OPERATE PUMP
ABOVE 160 mph (139 kts) IAS

MANEUVERING SPEED
160 mph (139 kts) IAS

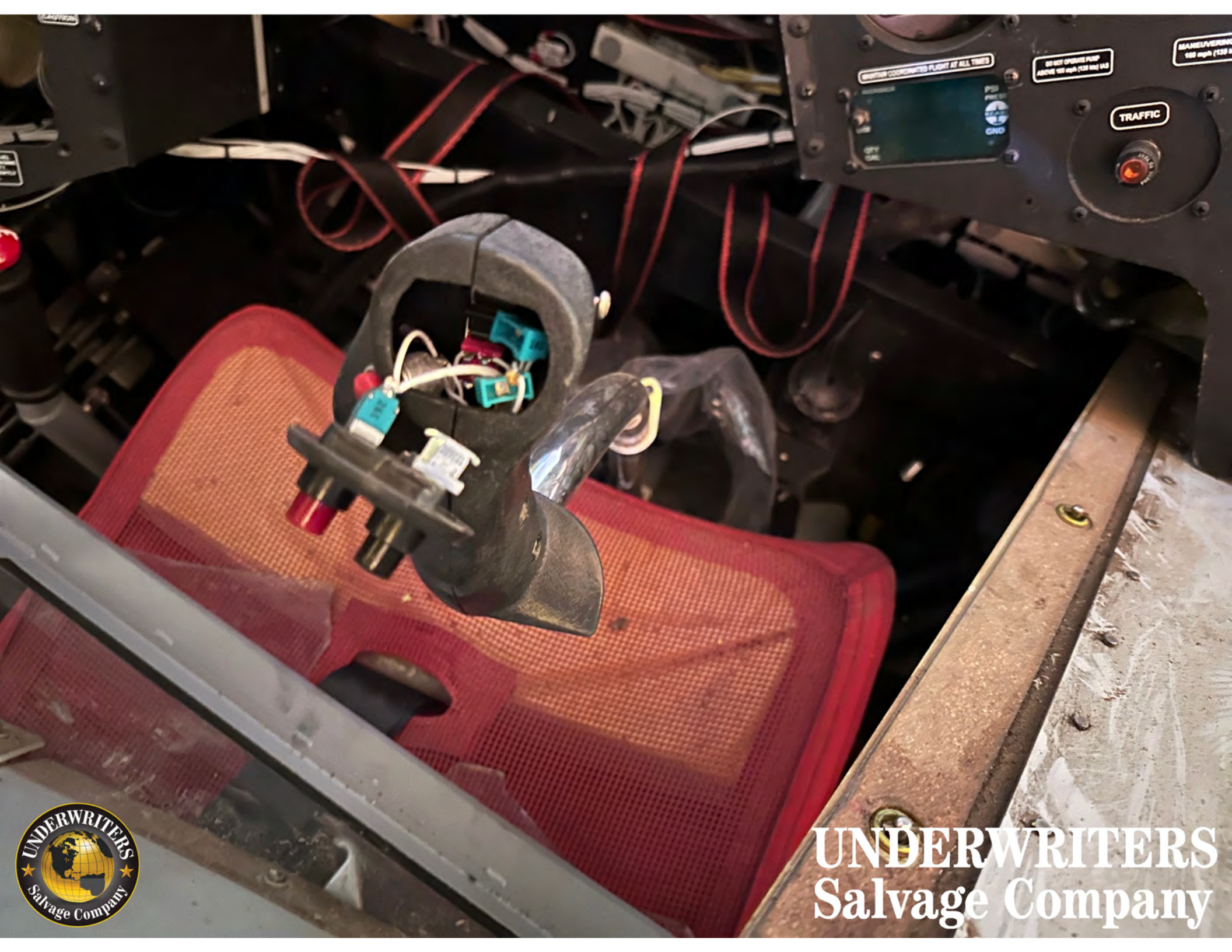
PSI
PRESI
QTY
GAL
READ
GND

TRAFFIC

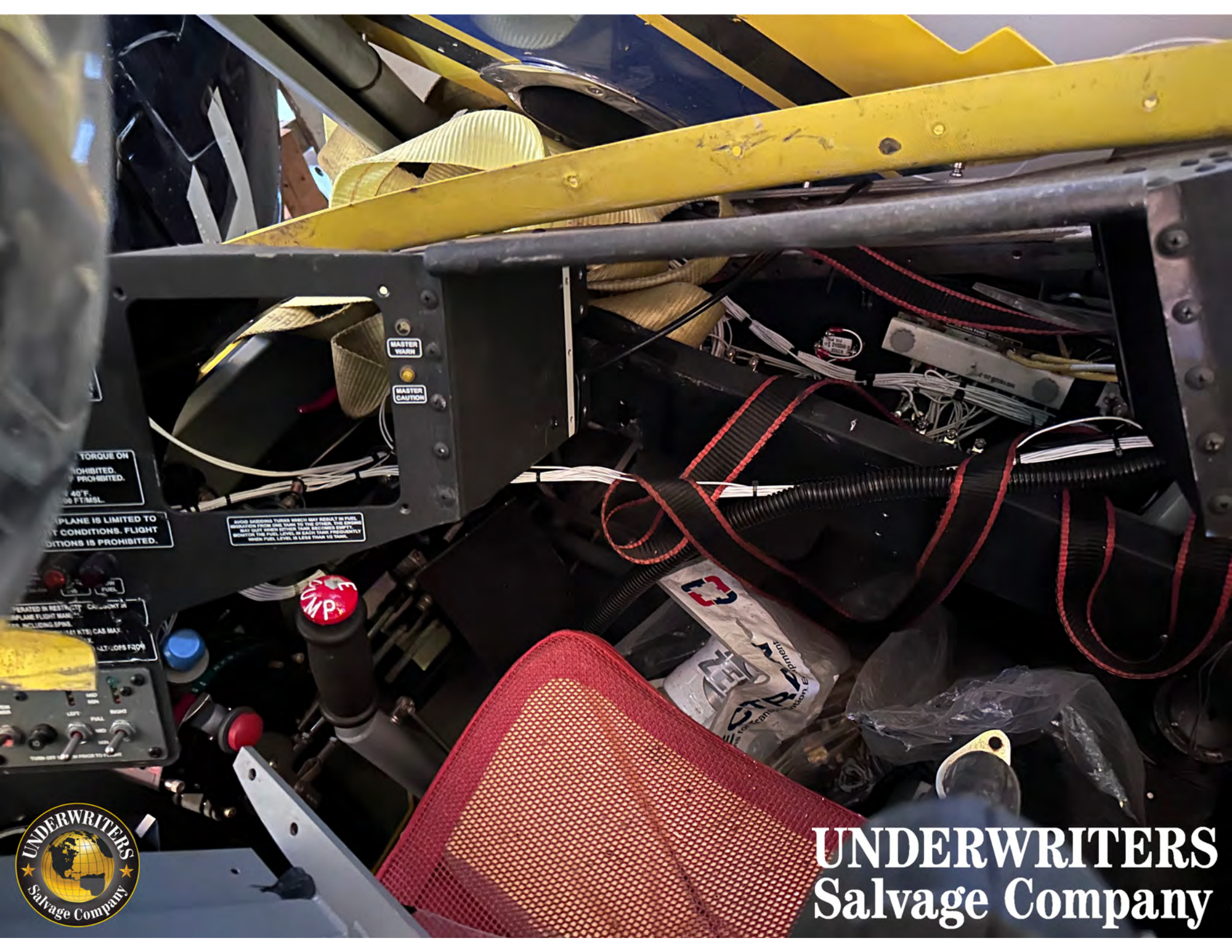


**UNDERWRITERS
Salvage Company**





**UNDERWRITERS
Salvage Company**



MASTER
WARN

MASTER
CAUTION

TORQUE ON
PROHIBITED.
PROHIBITED.
40°F.
FTMSL

PLANE IS LIMITED TO
CONDITIONS. FLIGHT
CONDITIONS IS PROHIBITED.

DO NOT OPERATE TURBO WHICH MAY RESULT IN FUEL
SYSTEMS FUELING AND STAY TO AIR SYSTEM. THE SYSTEM
MAY BE FULLY OPERATIONAL WHEN FUEL IS EMPTY.
MOUNTAIN THE FUEL LEVEL IN EACH TANK PROPERLY
WHEN FUEL LEVEL IS LESS THAN 1/2 TANK.

OPERATED IN RESTRICTED
FLIGHT MANEUVERING
INCLUDING STALL
MAX
CAS MAX
FTMSL
LEFT
RIGHT
PULL
PUSH
STOP

STOP
AMP



**UNDERWRITERS
Salvage Company**

ON
OFF
FUEL
BOOST
PUMP

ABOVE 1500 FT-LB TORQUE ON
UNDERSTORMS PROHIBITED.
TEMPERATURE BELOW 40°F PROHIBITED.
OPERATING BELOW 40°F.
OPERATING BELOW 12,500 FTMSL.
OPERATION OF THIS AIRPLANE IS LIMITED TO
DAY AND NIGHT VFR FLIGHT CONDITIONS. FLIGHT
IN UNKNOWN Icing CONDITIONS IS PROHIBITED.

WARNING

AVOID EXCESSIVE TURNING WHICH MAY RESULT IN FUEL
IMBALANCE FROM ONE TANK TO THE OTHER. THE ENGINE
MAY ONLY BE RUN FROM ONE TANK AT A TIME. CHECK
FUEL LEVELS IN EACH TANK FREQUENTLY
WHEN FUEL LEVEL IS LESS THAN 50 GALS.

SYSTEM POWER

FUEL AND MIN

LEFT FULL RIGHT

TURN OFF SYSTEM PRIOR TO FLIGHT

CAS MAX

ALT. LOSS FROM

LOW FUEL

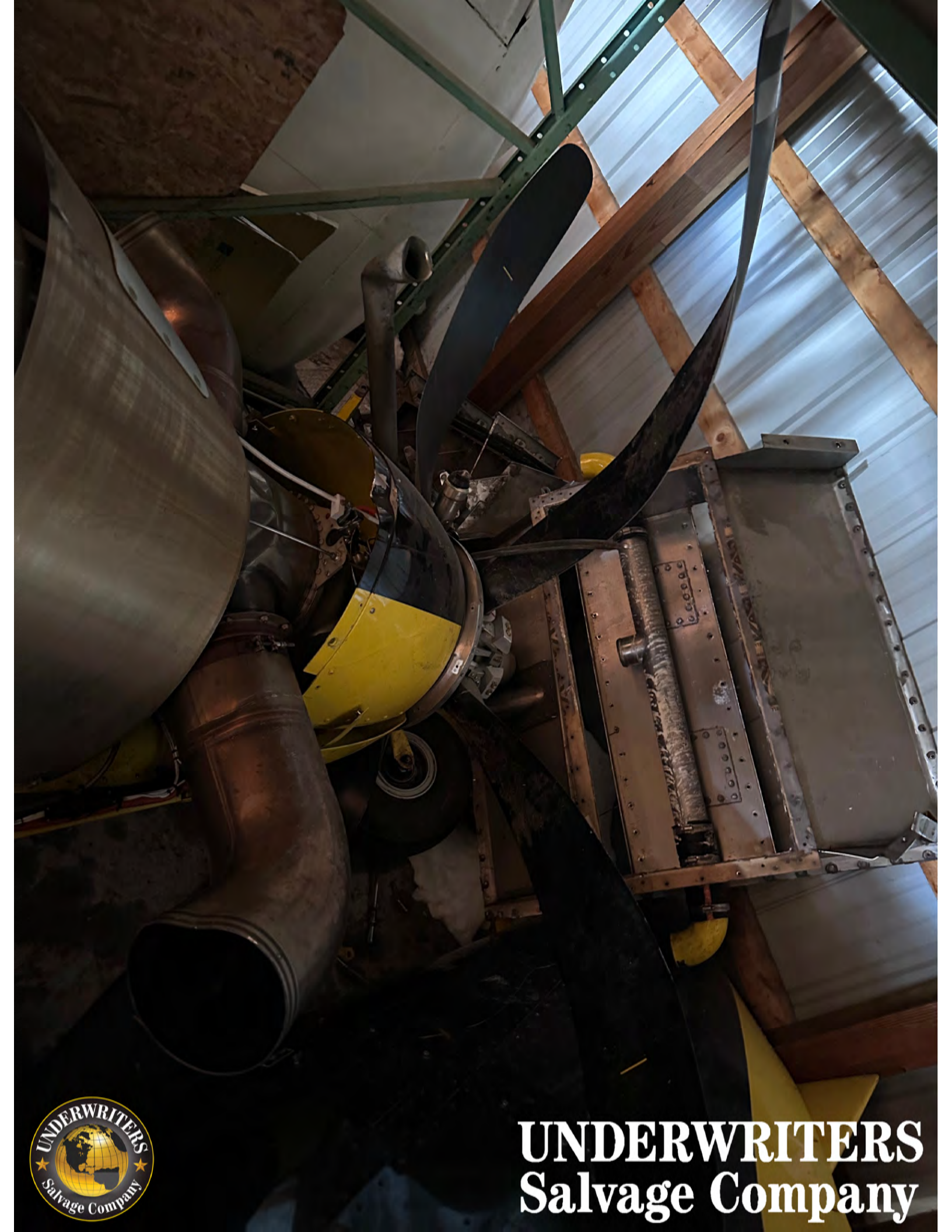
MP



**UNDERWRITERS
Salvage Company**



**UNDERWRITERS
Salvage Company**



**UNDERWRITERS
Salvage Company**



**UNDERWRITERS
Salvage Company**



**UNDERWRITERS
Salvage Company**



**UNDERWRITERS
Salvage Company**



**UNDERWRITERS
Salvage Company**

Protected with the U.S. Patent Office. Watermark: [redacted] does not purport to mark



**UNDERWRITERS
Salvage Company**



**UNDERWRITERS
Salvage Company**



UNDERWRITERS
Salvage Company



**UNDERWRITERS
Salvage Company**

Protected with final version of Visual Watermark. Full version doesn't put this mark.



UNDERWRITERS Salvage Company

Proceed with high caution of your www.underwriters.com. Full version doesn't put this mark.



**UNDERWRITERS
Salvage Company**



UNDERWRITERS Salvage Company



UNDERWRITERS Salvage Company



UNDERWRITERS Salvage Company



UNDERWRITERS Salvage Company

© 2017 Underwriters Salvage Company. All Rights Reserved. Full version does not put this mark



UNDERWRITERS Salvage Company

Protected with trial version of WPA! Watermark. Full version does not put this mark.



UNDERWRITERS Salvage Company



UNDERWRITERS Salvage Company

© 2014 Underwriters Salvage Company. All rights reserved.



UNDERWRITERS Salvage Company

Protected with trial version of Visual Watermark. Full version doesn't put this mark.



UNDERWRITERS Salvage Company



UNDERWRITERS Salvage Company



UNDERWRITERS Salvage Company



**UNDERWRITERS
Salvage Company**

Underwriters Salvage Company is a registered trademark of Underwriters Salvage Company. All other trademarks are the property of their respective owners.



UNDERWRITERS Salvage Company

Protected with real version of Visual Watermark. Full version doesn't put this mark.



UNDERWRITERS
Salvage Company



**UNDERWRITERS
Salvage Company**

Protected with trial version of Visual Watermark. Full version doesn't put this mark.



**UNDERWRITERS
Salvage Company**



**UNDERWRITERS
Salvage Company**



**UNDERWRITERS
Salvage Company**



**UNDERWRITERS
Salvage Company**

ERD
PTER

RESTRICTED



**UNDERWRITERS
Salvage Company**