

AIRCRAFT DAMAGE ASSESSMENT REPORT

Model:	SF50	Registration:	N184AS	Serial:	0585	Hobbs:	114.1	Flight Hours:	95.4
Location:	KLOZ London, KY			A/C Operator:					
Work Order #:	DLH23637-06-2025			Date of Damage:	5/16/2025				
Cirrus Case #:	00449020			Report Completed:	6/9/2025				
Inspector:		Phone:		Email:					
DOM:		Phone:		Email:					

Cause of Damage

Hangar Collapse Due to Tornado

Reference Documents

SF50 AMM 51-10 Damage Assessment & Reporting

Inspection Methods and Areas Assessed

Visual: Mirror, Flashlight, Borescope, Coin Tap Test / 18" Surrounding Area of Known/Suspected Areas of Impact

Damage Location / Classification / Extent

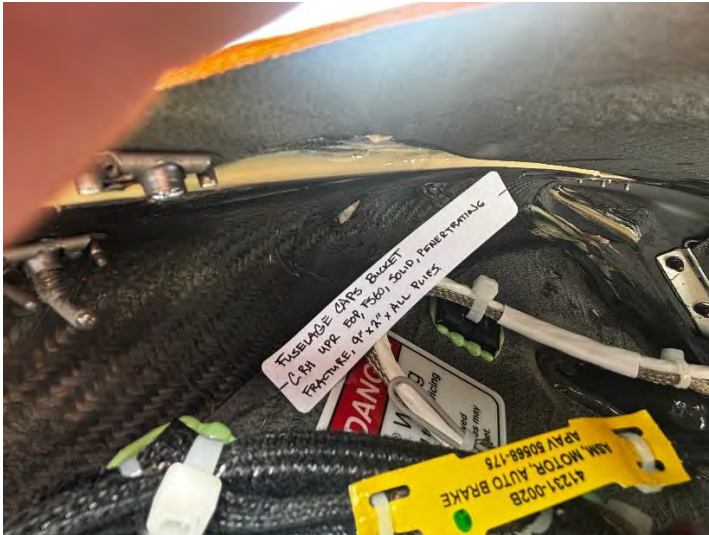
1. Fuselage - CAPS Bucket, LH UPR EOP, FS79 / Sandwich Structure - Laminate Only - Penetrating - Fracture / 12" x 4", All Plies.



2. Fuselage - CAPS Bucket, RH UPR EOP, FS80 / Sandwich Structure - Laminate Only - Penetrating - Fracture / 19" x 7", All Plies.



3. Fuselage - CAPS Bucket, RH UPR EOP, FS60 / Sandwich Structure - Laminate Only - Penetrating - Fracture / 9" x 2", All Plies.



4. Fuselage - Cabin Skin, FS97 RBL23, Toolside / Sandwich Structure - Laminate Only - Non-Penetrating - Fracture / 7" x 3", 3 Plies.



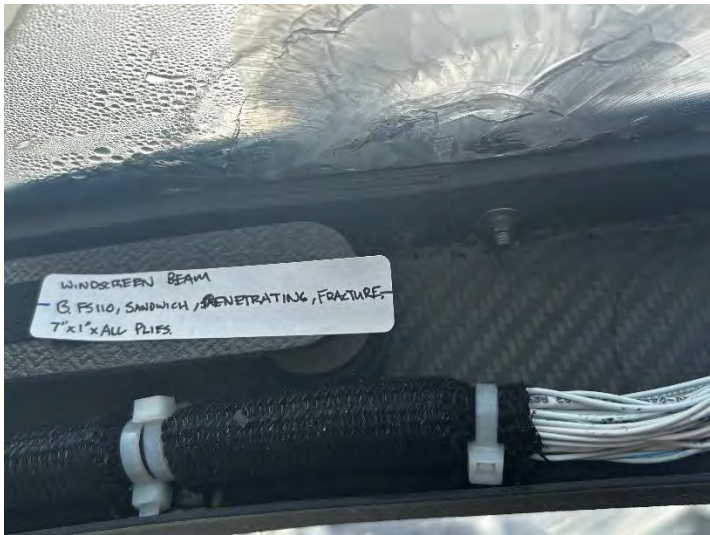
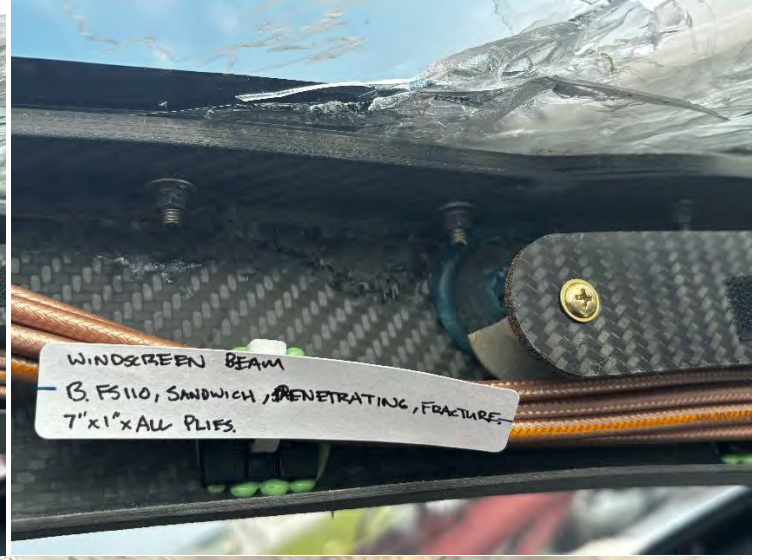
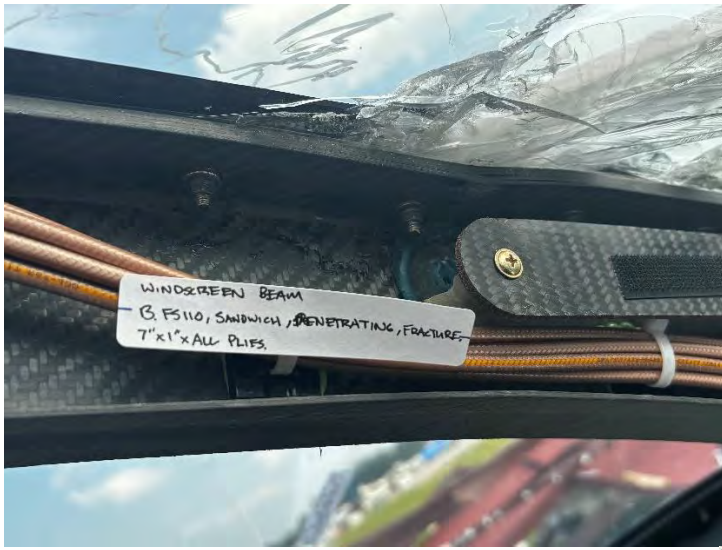
5. Fuselage - Cabin Skin, Windscreen Flange, FS97 RBL18 / Solid Laminate - Non-Penetrating - Delamination / 8" x 1.5", 6 Plies.



6. Fuselage - Windscreen Beam, FS110 / Solid Laminate - Non-Penetrating - Delamination / 4" x 2", All Plies.



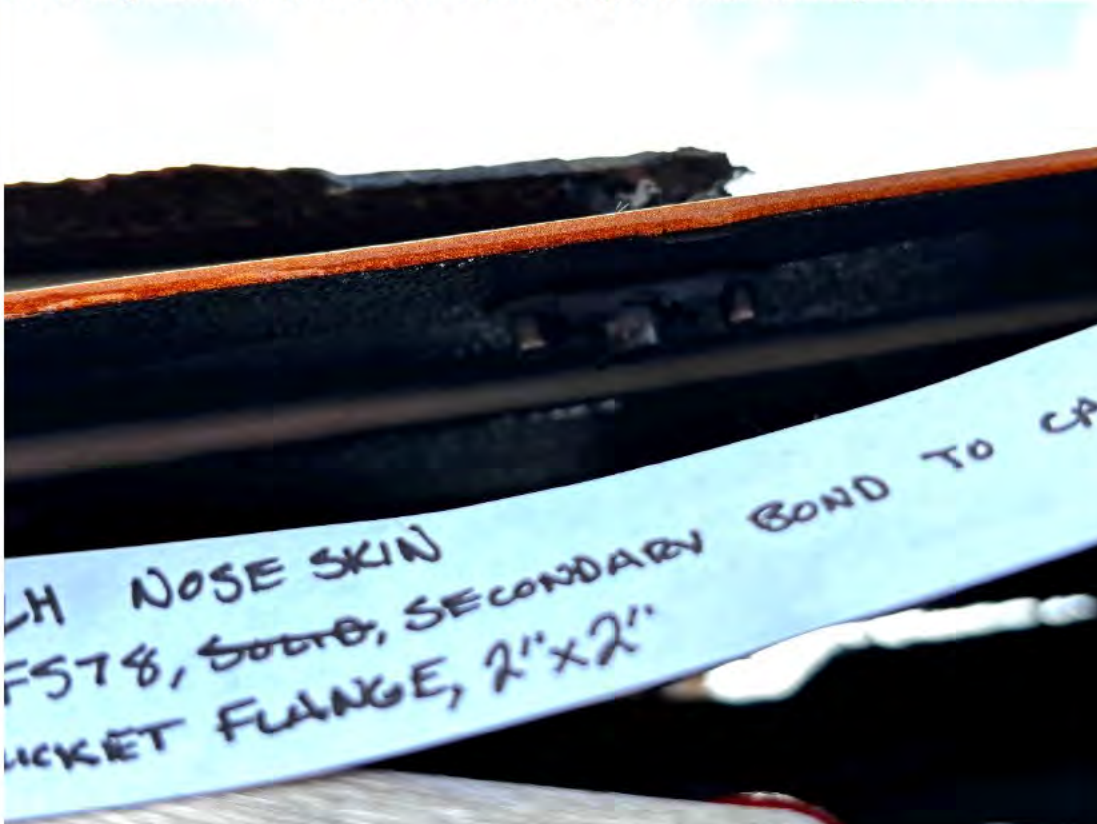
7. Fuselage - Windscreen Beam, FS110 / Sandwich Structure - Laminate Only - Penetrating - Fracture / 7" x 1", All Plies.



8. Fuselage - RH Nose Skin, FS38 / Solid Laminate - Penetrating - Fracture / 2" x 5", All Plies.



9. Fuselage - LH Nose Skin to CAPS Bucket Flange, FS78 / Secondary Bond / 2" x 2".



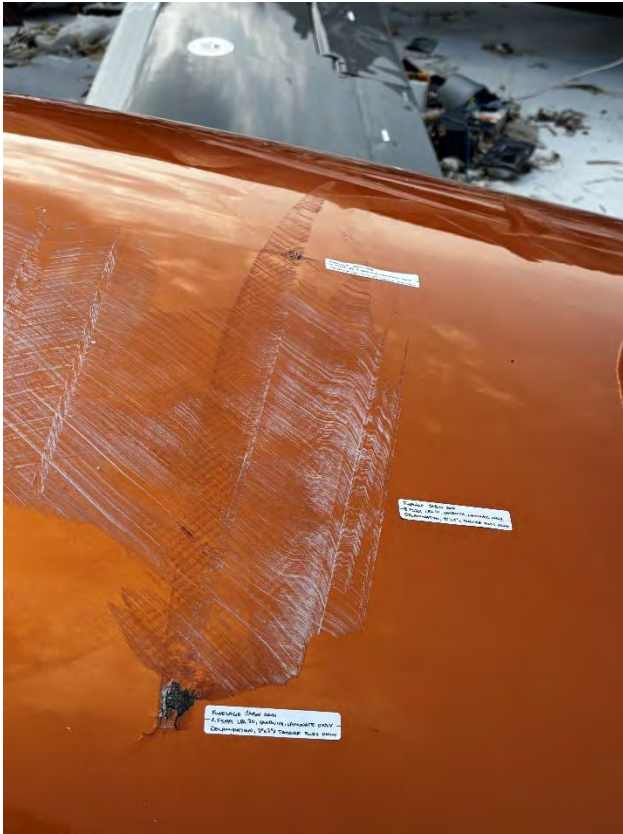
10. Fuselage - Cabin Skin, FS155, Toolside / Sandwich Structure - Laminate and Core / 16" x 10" x .05", Core Compression.



11. Fuselage - Cabin Skin, FS201 LBL10, Toolside / Sandwich Structure - Laminate Only - Non-Penetrating - Delamination / 8" x 4", Toolside Plies Only.



12. Fuselage - Cabin Skin, FS199 LBL20, Toolside / Sandwich Structure - Laminate Only - Non-Penetrating - Delamination / 2" x 2", Toolside Plies Only.



13. Fuselage - Cabin Skin, FS202 LBL3, Toolside / Sandwich Structure - Laminate Only - Non-Penetrating - Delamination / 1.5" x 1.5", Toolside Plies Only.



14. Fuselage - Cabin Skin, FS140 RBL18, Toolside / Sandwich Structure - Laminate Only - Non-Penetrating - Gouge / 1" x 1", Toolside Plies Only.



15. Fuselage - Cabin Skin, FS145 RBL14, Toolside / Sandwich Structure - Laminate Only - Non-Penetrating - Gouge / 2" x 1.5", Toolside Plies Only.



16. Fuselage - Cabin Skin, FS146 RBL15, Toolside / Sandwich Structure - Laminate Only - Non-Penetrating - Delamination / 1" x 1", Toolside Plies Only.



17. Fuselage - Cabin Skin, FS148 RBL10, Toolside / Sandwich Structure - Laminate Only - Non-Penetrating - Gouge / 1" x 1", Toolside Plies Only.



18. Fuselage - UPR Tail Skin, FS340 CTR / Sandwich Structure - Laminate Only - Non-Penetrating - Fracture / 5" x 3", Toolside Plies Only.



19. Fuselage - UPR Tail Skin, FS335 LBL11, Toolside / Sandwich Structure - Laminate Only - Non-Penetrating - Fracture / 3" x 3", Toolside/Core.



20. Fuselage - UPR Tail Skin, FS362 to LWR Skin / Secondary Bond / 14" x 1"



21. Fuselage - UPR Tail Skin, FS369 LBL6 / Solid Laminate - Penetrating - Fracture / 2" x 1", All Plies.



22. Fuselage - UPR Tail Skin, FS369 RBL6 / Solid Laminate - Penetrating - Fracture / 2" x 1", All Plies.



23. Fuselage - LWR Tail Skin, FS360 LBL2, Toolside / Sandwich Structure - Laminate Only - Penetrating - Fracture / 6" x 7", All Plies.



24. Fuselage - LWR Tail Skin, FS370 LBL6, Toolside / Solid Laminate - Penetrating - Fracture / 4" x 5", All Plies.



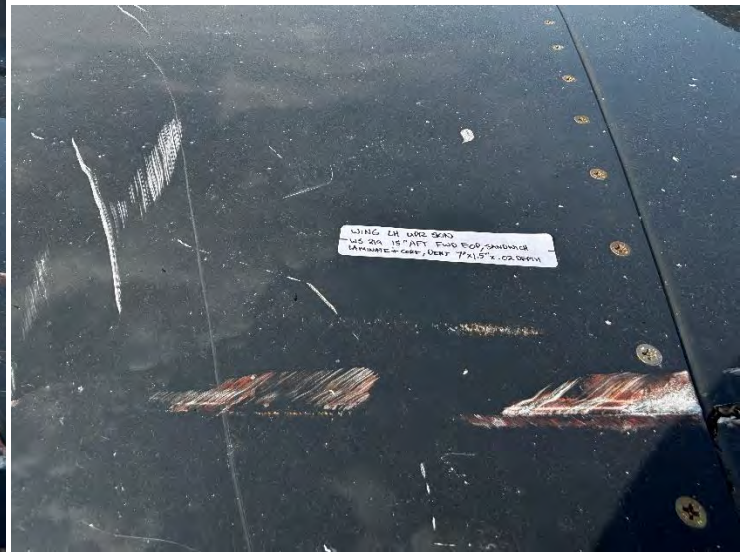
25. Fuselage - LWR Tail Skin, FS370 RBL6, Toolside / Sandwich Structure - Laminate Only - Penetrating - Fracture / 8" x 8", All Plies.



26. Fuselage - Stabilizer Aft Bulkhead / Component - Damage Beyond Repair



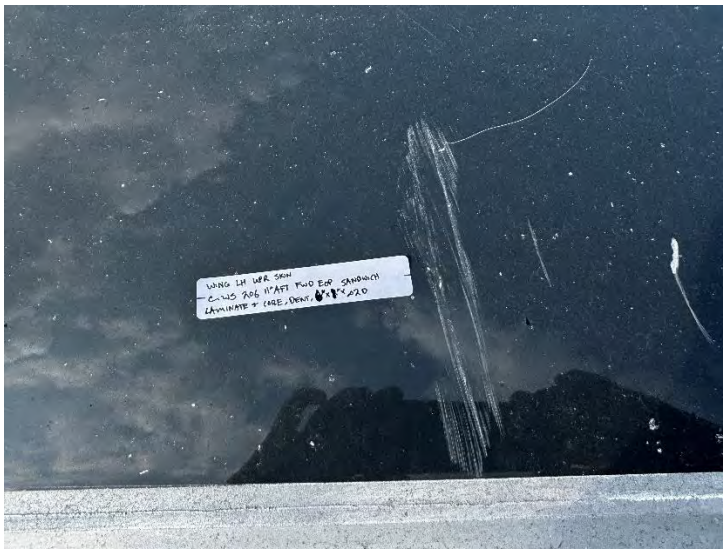
27. Wing - LH UPR Wing Skin, WS219, 15" Aft of FEOP, Toolside / Sandwich Structure - Laminate and Core / 7" x 1.5" x .02"D, Core Compression.



28. Wing - LH UPR Wing Skin, WS217 12" Aft of FEOP, Toolside / Sandwich Structure - Laminate and Core / 7" x 1" x .02"D, Core Compression.



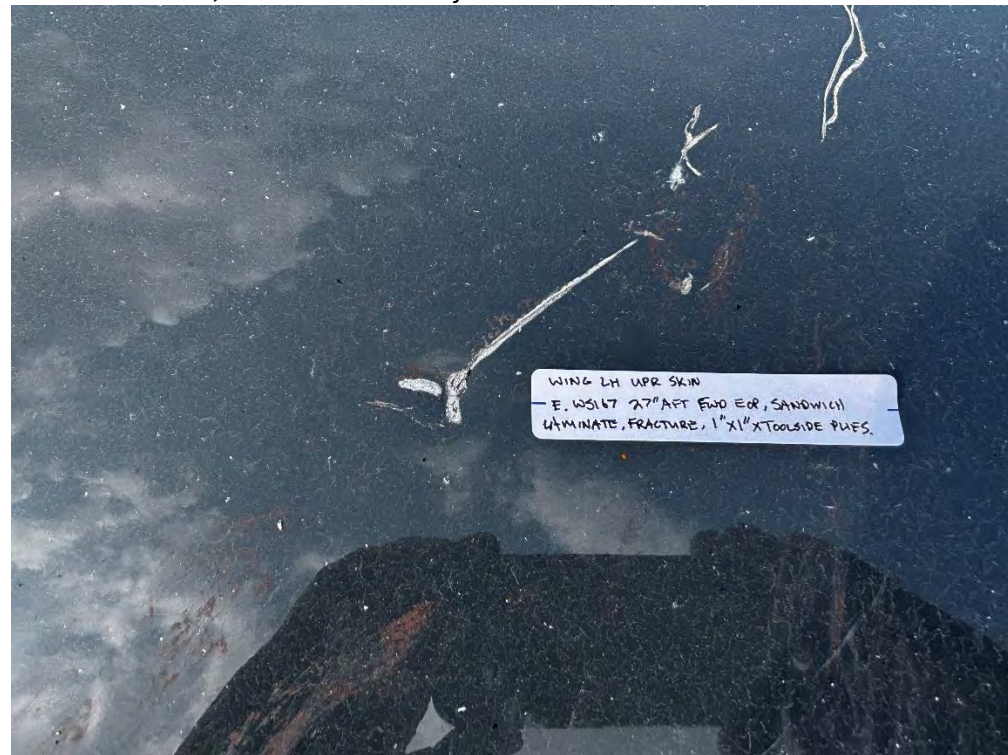
29. Wing - LH UPR Wing Skin, WS206, 11" Aft of FEOP, Toolside / Sandwich Structure - Laminate and Core / 6" x 1" x .02"D, Core Compression.



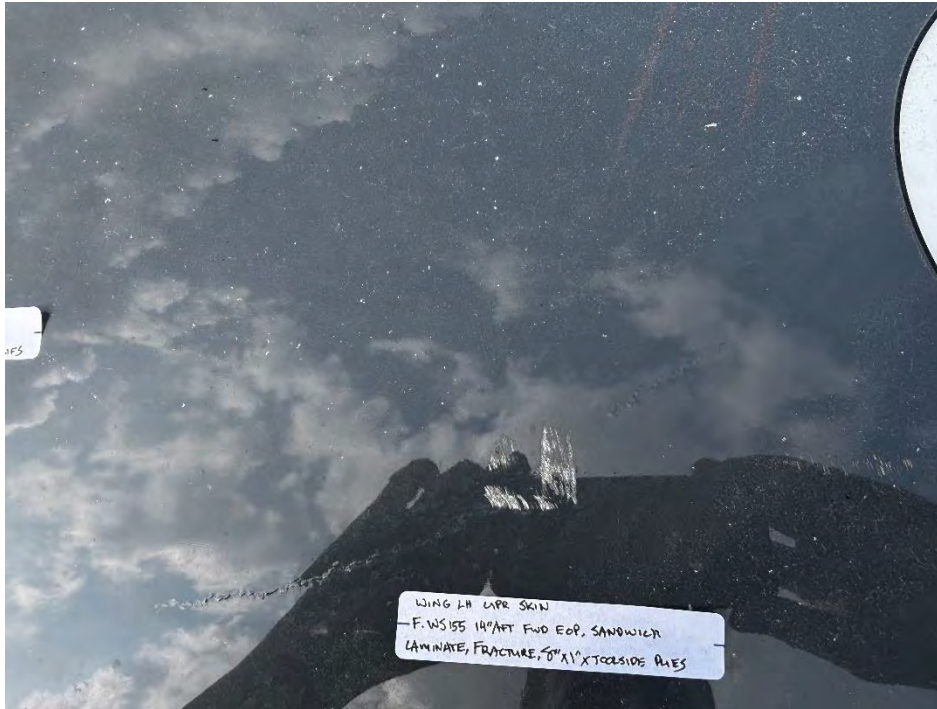
30. Wing - LH UPR Wing Skin, WS171, 34" Aft of LEOP, Toolside / Sandwich Structure - Laminate Only - Non-Penetrating - Delamination / 2" x 2", Toolside Plies Only.



31. Wing - LH UPR Wing Skin, WS167 27" Aft LEOP, Toolside / Sandwich Structure - Laminate Only - Penetrating - Fracture / 1" x 1", Toolside Plies Only.



32. Wing - LH UPR Wing Skin, WS155 14" Aft of LEOP, Toolside / Sandwich Structure - Laminate Only - Penetrating - Fracture / 8" x 1", Toolside Plies Only.



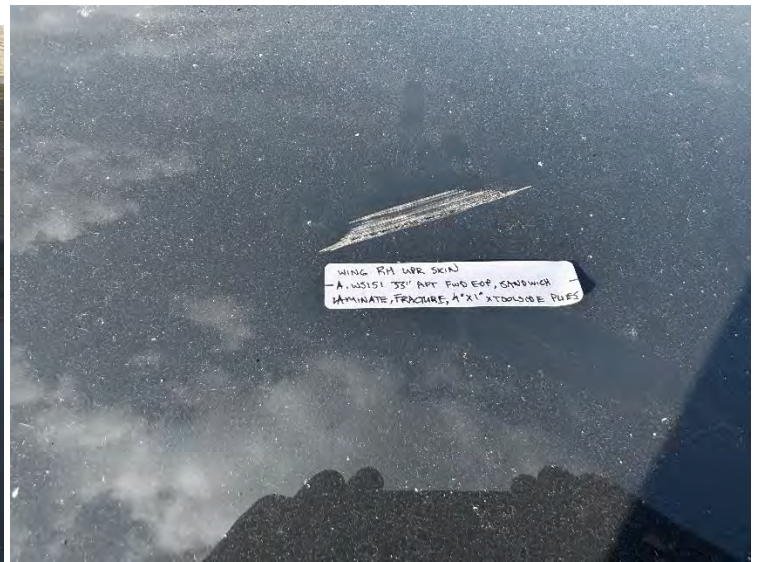
33. Wing - LH UPR Wing Skin, WS145.5 17" Aft of LEOP, Toolside / Sandwich Structure - Laminate Only - Penetrating - Fracture / 5" x 3", Toolside Plies Only.



34. Wing - LH LWR Wing Skin, WS146, LEOP, Toolside / Solid Laminate - Penetrating - Fracture / 2" x 1", All Plies.



35. Wing - RH UPR Wing Skin, WS151 33" Aft of LEOP, Toolside / Sandwich Structure - Laminate Only - Penetrating - Fracture / 4" x 1", Toolside Plies Only.



36. Wing - RH UPR Wing Skin, WS115 37" Aft of LEOP, Toolside / Sandwich Structure - Laminate Only - Non-Penetrating - Delamination / 2" x 1", Toolside Plies Only.



37. Wing - RH UPR Wing Skin, WS113 30" Aft of LEOP, Toolside / Sandwich Structure - Laminate Only - Non-Penetrating - Delamination / 3" x 1", Toolside Plies Only.



38. Wing - RH UPR Wing Skin, WS100, 30" Aft of LEOP, Toolside / Sandwich Structure - Laminate Only - Non-Penetrating - Delamination / 1" x 1", Toolside Plies Only.



39. Component - LH Aileron / Component - Damage Beyond Repair



40. Component - LH Flap / Cosmetic (Scratching) / TE Gouging - Damage Beyond Repair.



41. Component - RH Aileron / Component - Damage Beyond Repair



42. Component - RH Flap / Component - Damage Beyond Repair



43. Component - RH Ruddervator / Component - Damage Beyond Repair



44. Component - LH Ruddervator / Component - Damage Beyond Repair



45. Component - LH Yaw SAS Control Surface / Component - Damage Beyond Repair



46. Component - RH Yaw SAS Control Surface / Component - Damage Beyond Repair



47. Component - LH Stabilizer / Component - Damage Beyond Repair





48. Component - RH Stabilizer / Component - Damage Beyond Repair



49. Composite Detail Part - LH Ventral / Component - Damage Beyond Repair



50. Composite Detail Part - RH Ventral / Component - Damage Beyond Repair



51. Component - GPS Antenna / Component - Damage Beyond Repair



52. Component - XM Radio Antenna / Component - Damage Beyond Repair (**Photo Above**)

53. Component - Comm 1 Antenna / Component - Damage Beyond Repair



54. Component - Transponder 2 Antenna / Component - Damage Beyond Repair (**No photo provided**)

55. Composite Detail Part - CAPS Cover / Component - Damage Beyond Repair



56. Component - Windscreen Spraybar / Component - Damage Beyond Repair



57. Component - CAPS System / Component – Moisture/Damage Beyond Repair



58. Component - AOA Sensor / Component - Damage Beyond Repair



59. Component - RH Windscreen / Component - Damage Beyond Repair



60. Component - LH Windscreen / Component - Damage Beyond Repair



61. Component - LH Cabin Window / Component - Damage Beyond Repair



62. Component - Egress Window / Component - Damage Beyond Repair



63. Component - RH Pax Fwd Window / Component - Damage Beyond Repair



64. Component - RH Pax Aft Window / Component - Damage Beyond Repair



65. Component - LH Pneumatic De-Ice Boot / Component - Damage Beyond Repair



66. Component - RH Pneumatic De-Ice Boot / Component - Damage Beyond Repair



67. Component - LH Fuel Cap / Component – Missing/Damage Beyond Repair **(No photo provided)**

68. Composite Detail Part- LH Wingtip / Component - Damage Beyond Repair



69. Composite Detail Part - RH Wingtip / Component - Damage Beyond Repair



70. Composite Detail Part - LH MLG Door / Component - Damage Beyond Repair



71. Component - LH MLG Door Hinge / Component - Damage Beyond Repair



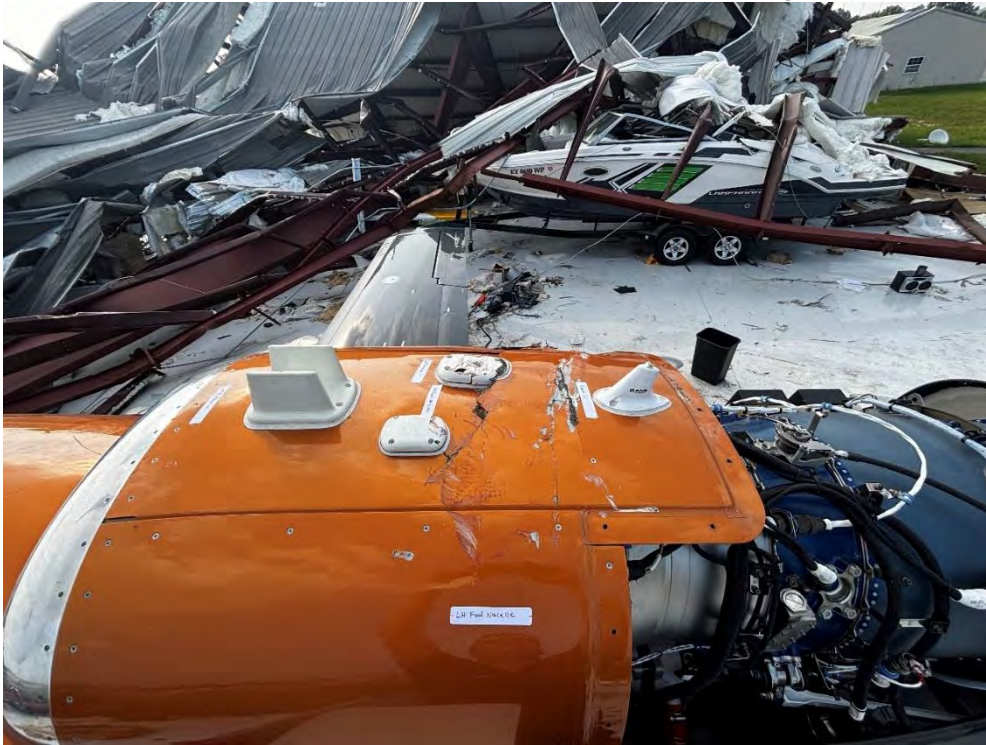
72. Composite Detail Part - LH Fwd Nacelle / Component - Damage Beyond Repair



73. Composite Detail Part - RH Fwd Nacelle / Component - Damage Beyond Repair



74. Composite Detail Part - UPR Nacelle / Component - Damage Beyond Repair



75. Composite Detail Part - RH Mid Nacelle / Component - Damage Beyond Repair



76. Composite Detail Part – LH Mid Nacelle / Component - Cosmetic / Scratches



77. Component - Fwd Inlet Bulkhead / Component - Damage Beyond Repair



78. Composite Detail Part - UPR Tailcone / Component - Damage Beyond Repair



79. Composite Detail Part - LWR Tailcone / Component - Damage Beyond Repair



80. Component - LH Ruddervator Pushrod / Component – Bent / Damage Beyond Repair



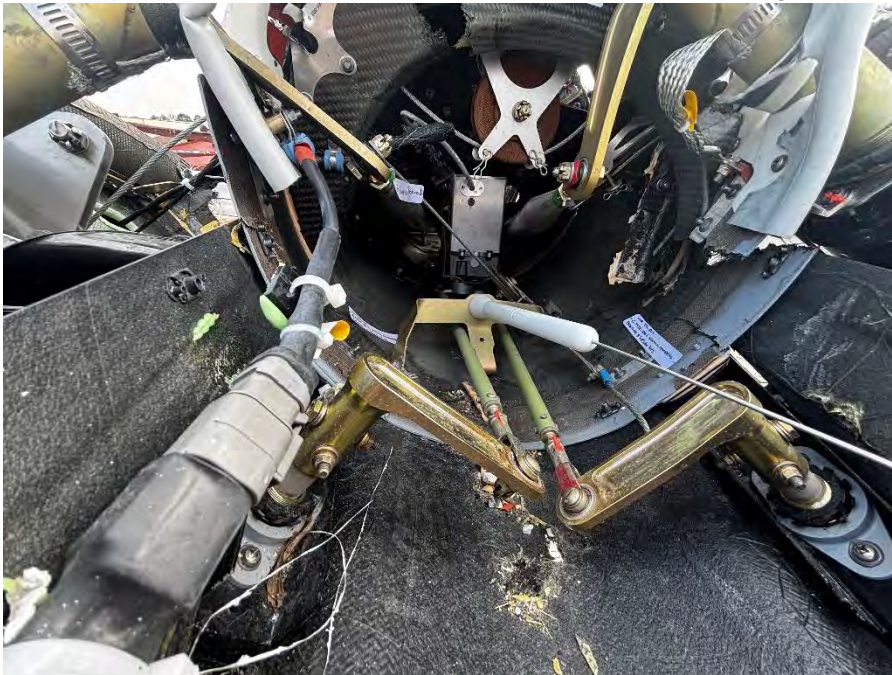
81. Component - RH Ruddervator Pushrod / Component - Bent / Damage Beyond Repair



82. Component - LH Yaw SAS Pushrods / Component - Damage Beyond Repair



83. Component - RH Yaw SAS Pushrods / Component - Damage Beyond Repair



84. Composite Detail Part - LH Cheek Panel / Component - Damage Beyond Repair



85. Composite Detail Part - RH Cheek Panel / Component - Damage Beyond Repair



86. Component - ELT Bracket / Component - Damage Beyond Repair



87. Component - Pitch Trim Cables / Component - Damage Beyond Repair



88. Component - Yaw Cables / Component - Damage Beyond Repair



89. Component - Pitch Trim Aft Center Pulley Bracket / Component - Damage Beyond Repair



90. Component - RDM Cable Harness / Component - Damage Beyond Repair (**No photo provided**)

91. Component - RH Pneumatic Boot Feed Line / Component - Damage Beyond Repair



92. Component - LH Pneumatic Boot Feed Line / Component - Damage Beyond Repair



93. Component - Cabin Center Seat / Component - Damage Beyond Repair



94. Component – Engine Inlet - Gouging / Component – Damage Beyond Repair

